

Job Name: \_\_\_\_\_

Location: \_\_\_\_\_

Purchaser: \_\_\_\_\_

Engineer: \_\_\_\_\_

Submitted To: \_\_\_\_\_

For:  Reference  Approval  Construction

Submitted By: \_\_\_\_\_

Date: \_\_\_\_\_

Unit Designation: \_\_\_\_\_

**Cooling Performance:**

Nominal Capacity	42,700 Btu/h
Nominal Sensible Capacity	34,700 Btu/h
EWT Range	40-50°F (5-10°C)
Nominal Flow Rate	8.0 GPM
Nominal Pressure drop	5.4 Ft/Hd

**Heating Performance:**

Nominal Capacity	50,200 Btu/h
EWT Range	100-125°F (38-52°C)
Nominal Flow Rate	8.0 GPM
Nominal Pressure drop	5.4 Ft/Hd

**Notes:**

- Cooling Capacity is based on 50°F Entering Water Temp and 80°F DB/67°F WB Entering Air Conditions.
- Heating Capacity is based on 110°F Entering Water Temp and 70°F DB Entering Air Conditions.
- Refer to detailed capacity tables for further information pertaining to the entire entering water temperature range and for flow rates and pressure drop.

**Airflow Rate:**

Fan Motor Type	PSC
Nominal CFM	1600 CFM
Total External Static Pressure	Std: 0.3"WG / Max: 0.5"WG
Blower Speed setting	"HIGH" Speed Setting
Motor rating	1/2 HP
Airflow arrangement	<input type="checkbox"/> Up-flow, <input type="checkbox"/> Horz. Left, <input type="checkbox"/> Horz. Right (Possible)

**Electrical Data:**

Power supply	120V / 1PH / 60Hz
Min. Circuit Amps (MCA)	10 AMP
Max. overcurrent protection (MOP)	15 AMP

**Physical Data:**

Dimension (H x W x D)	48"x21-1/4"x28"
Weight	230 lbs
Insulation type / R-Rating	1/2"JM TUF-SKIN
Installation Clearances: U.L. Listed for installation with Zero inches Clearance to Combustible materials	

**Connection type**

Inlet / Outlet Connections	1"(Nominal)
Connection Type	Sweat
Drain Connections	3/4"(M) NPT

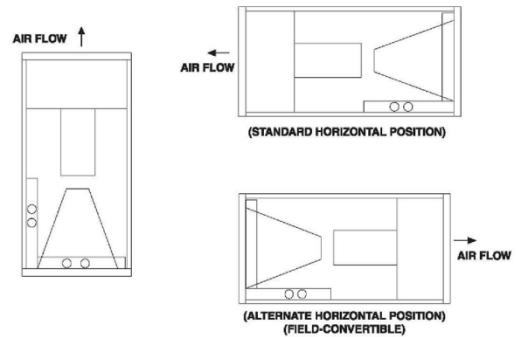
**Feature:**

Air Filter (MERV 8 Throwaway)	20"x25"x1"
-------------------------------	------------

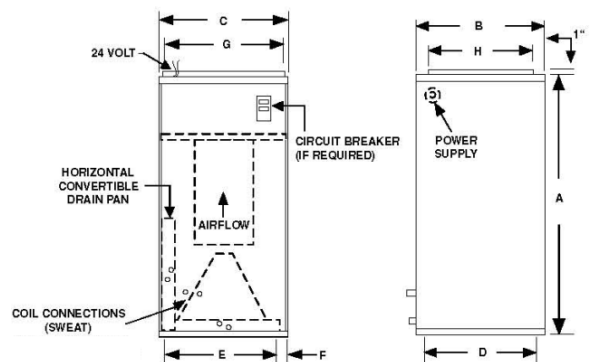


**Airflow arrangement**

**3-WAY AIRFLOW**



**Physical Dimensions**



A	B	C	D	E	F	G	H	FILTER SIZE
48	28	21-1/4	26-1/4	17-1/4	2	19-1/4	18	20x25x 1